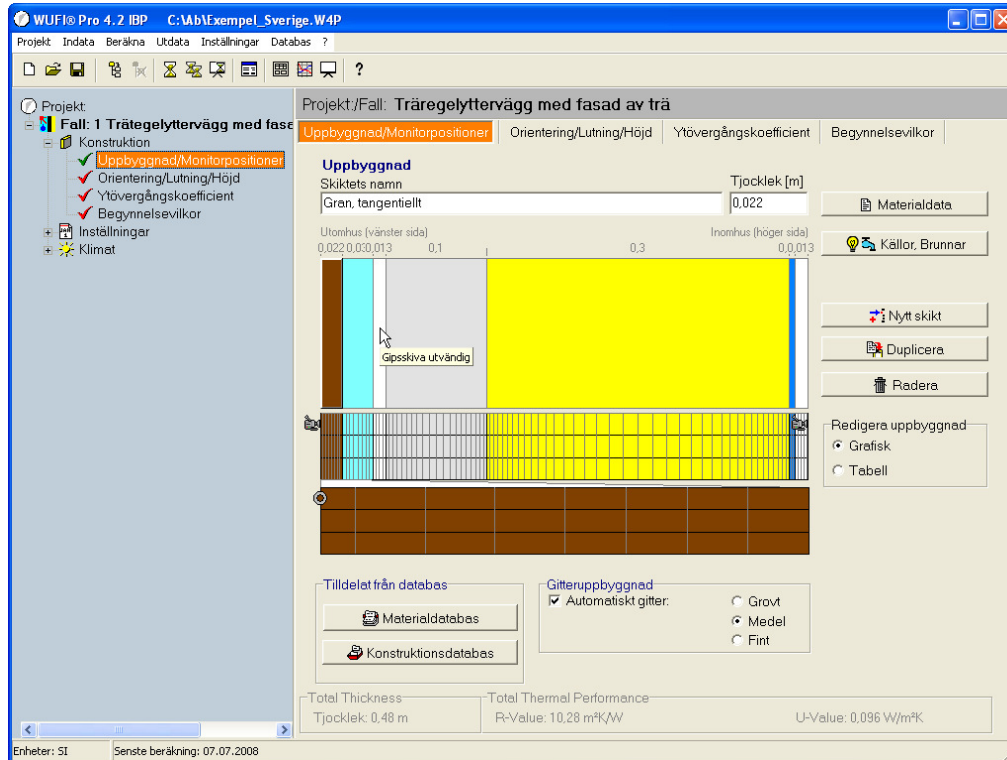


What's New in WUFI 1D Pro 4.2

❖ Swedish GUI

As we have a new cooperation with Lund University, the WUFI GUI runs now also in Swedish.



❖ New Material Data

The material database has been extended with twenty generic materials from Sweden.

Namn	Densitet [kg/m³]	Poros. [m³/m³]	Värmekap. [J/kgK]	Värmeledn. [W/mK]	Diffusionsmotstånd [-]
Avjämningsmassa	1782	0.34	850	1.7	45.5
Betong VCT 0.4, välhydratiserad	2322	0.14	850	1.7	192
Betong VCT 0.5, välhydratiserad	2308	0.15	850	1.7	179
Betong VCT 0.6, välhydratiserad	2291	0.15	850	1.7	147
Betong VCT 0.7, välhydratiserad	2275	0.16	850	1.7	147
Cellplast expanderad	20	0.98	1500	0.04	21.7
Cellplast extruderad	20	0.98	1500	0.04	125
Cementpasta VCT 0.6, välhydratiserad	1413	0.48	1000	1.7	25
Fibercementskiva	1610	0.15	850	0.13	83.3
Gipsskiva invändig	625	0.73	850	0.2	8.33
Gipsskiva utvändig	675	0.71	850	0.2	8.33
Gran, tangentiellt	430	0.73	1600	0.14	83.3
Kalksten, Öland	2650	0.03	2600	3	35.7
Lamellbräda	560	0.65	1500	0.13	274
Laminatgolv	800	0.42	1600	0.15	2500
Linoleummatta, obehandlad	1200	0.23	900	1	6250
Sandsten, Gotland, Uddvide	2060	0.24	850	1.7	15.6
Spånskiva V313	660	0.59	1700	0.14	125
Träfiberskiva, hård	959	0.41	1700	0.13	227
Träfiberskiva, porös	270	0.83	1700	0.06	6.25

Nr.	RF [-]	Vatteninnehåll [kg/m³]
1	0.0	0.0
2	0.35	3.0
3	0.5	4.0
4	0.7	4.5
5	0.8	5.0
6	0.9	8.0
7	0.95	11.0
8	1.0	25.0

Also the following products are part of the database:

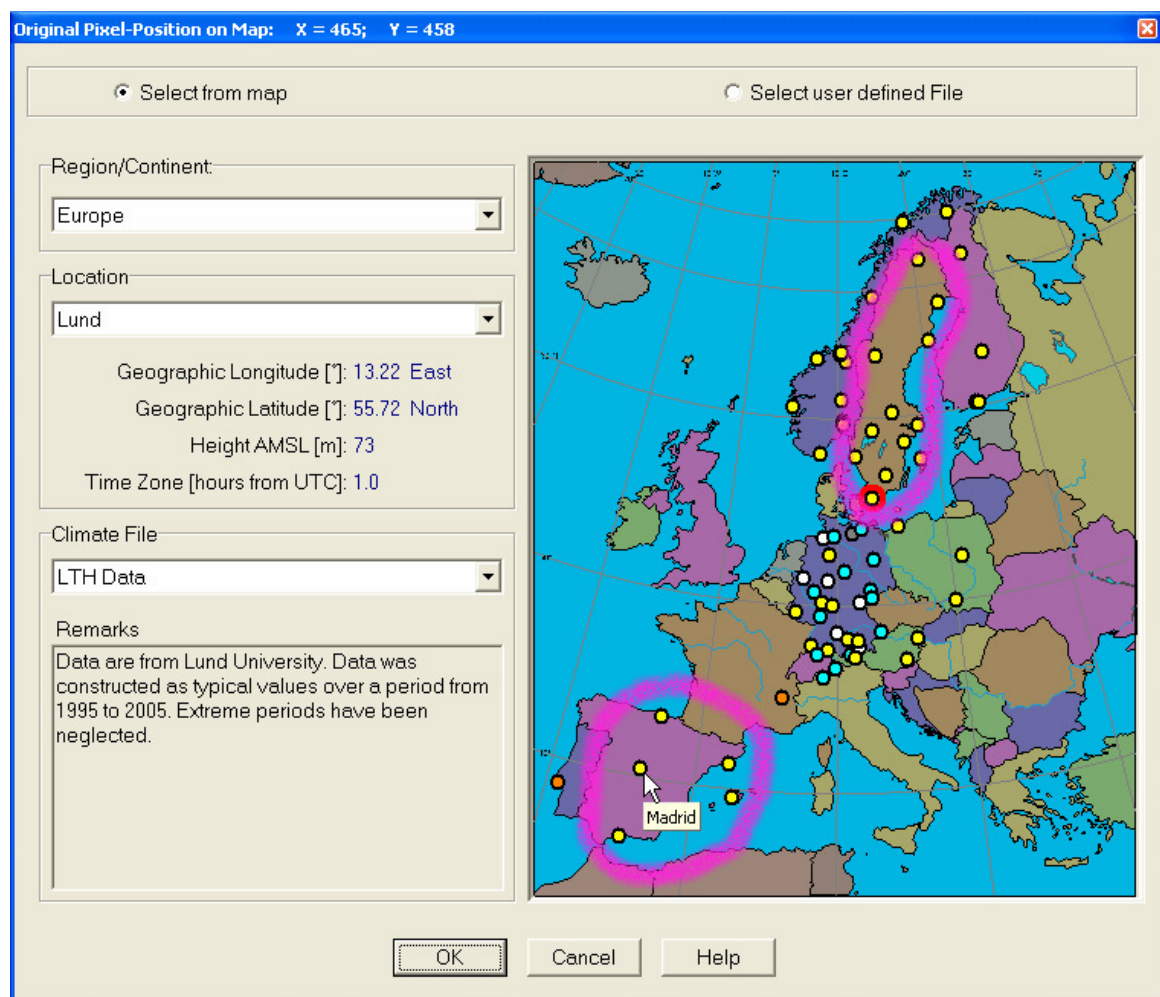
- Isofloc L
- Getifix mineral insulation board ambio
- Redstone mineral insulation board Pura

❖ **New Climate Data (only in Version WUFI Pro)**

12 new climate files for Sweden (Lund, Borlänge, Kiruna, Luleå, Umeå, Östersund, Karlstad, Stockholm, Norrköpping, Göteborg, Visby, Växjö).

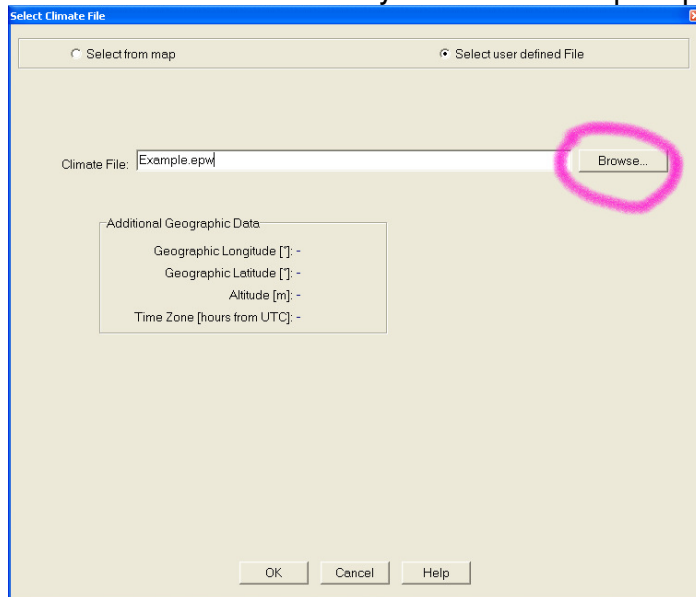
Also the 12 Test Reference Years of the Deutscher Wetterdienst from 1986 are now included with WUFI.

5 climate locations for Spain; Madrid, Barcelona, Bilbao, Malaga, Palma de Mallorca (Climate Files for Malaga and Palma de Mallorca are not ready yet).

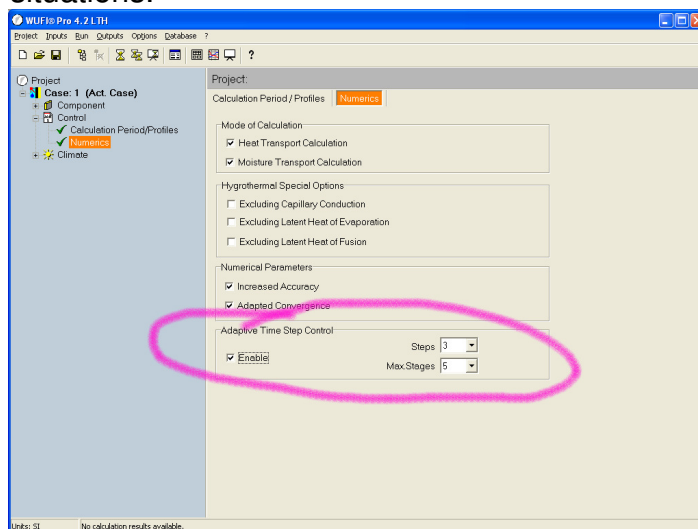


The location “Holzkirchen” contains now also a Moisture Reference Year including long-wave counterradiation from the atmosphere.

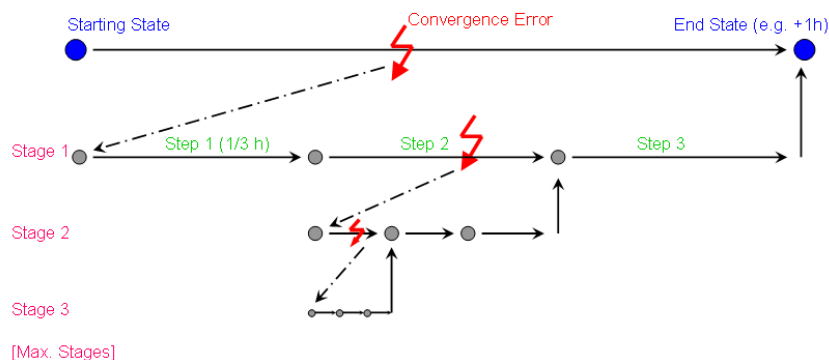
- ❖ **EPW; Energy Plus Weather Files (only in Version WUFI Pro)**
Those Files can be downloaded for free at <http://www.eere.energy.gov/buildings/energyplus> and used for WUFI calculations. Note that they do not contain precipitation data.



- ❖ **Adaptive Time Step Control (ATSC)**
This feature has been created to improve convergence behaviour in problematic situations.

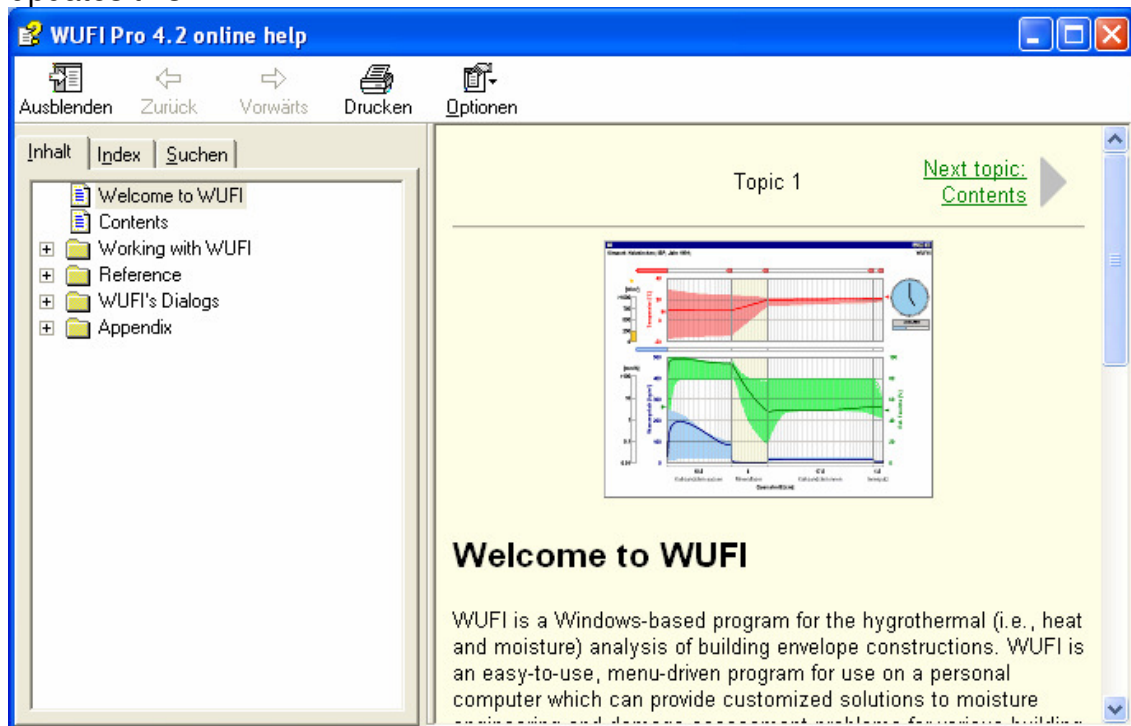


ATSC: Adaptive Time Step Control



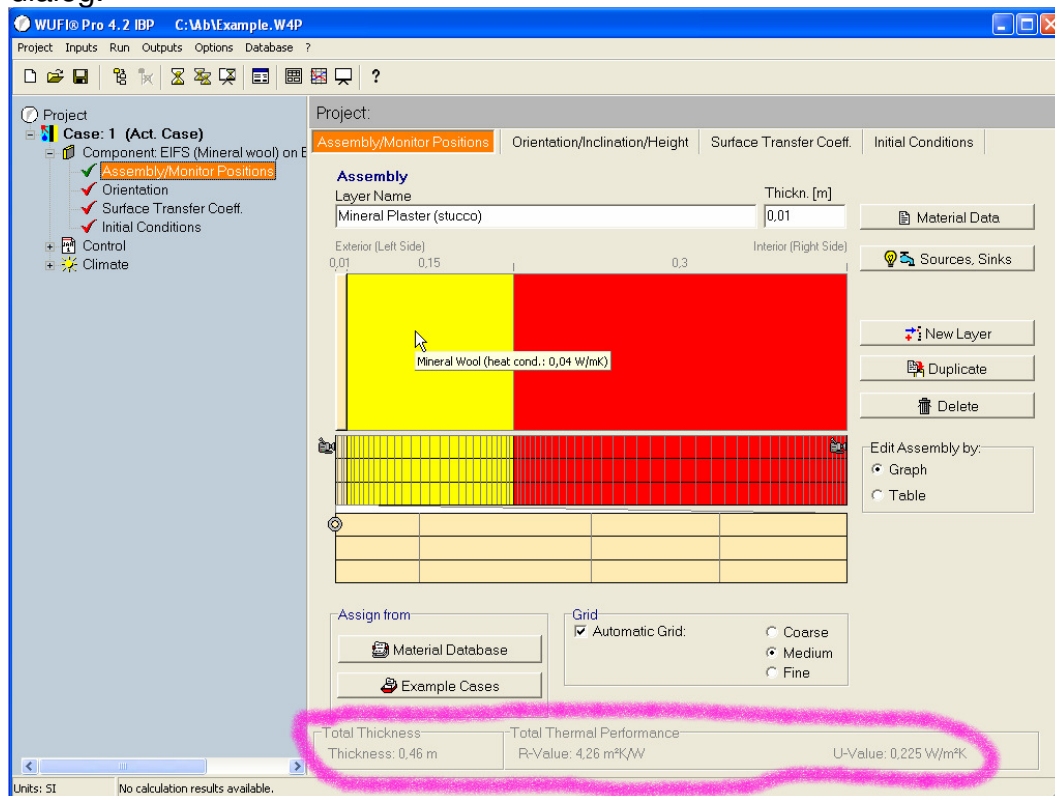
❖ HTML based Help System

All help systems of WUFI have been migrated to the HTML based help system. Some new features are not yet included in the help system. A future patch will updates this.



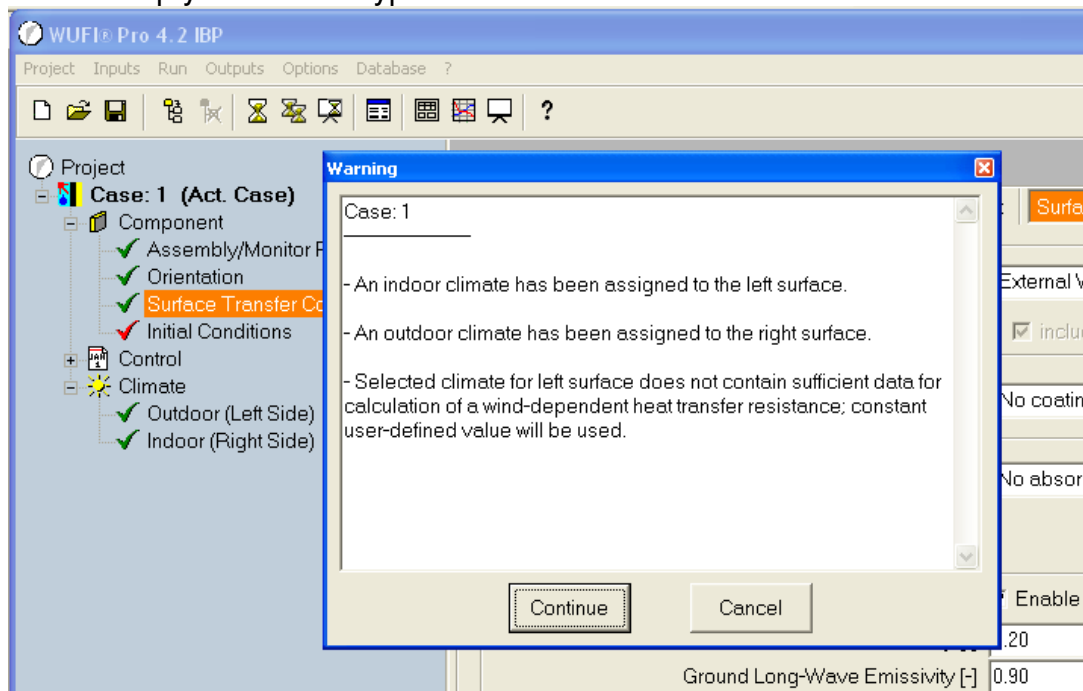
❖ Energy Performance Display

Energy performance values of the construction are displayed in the assembly dialog.



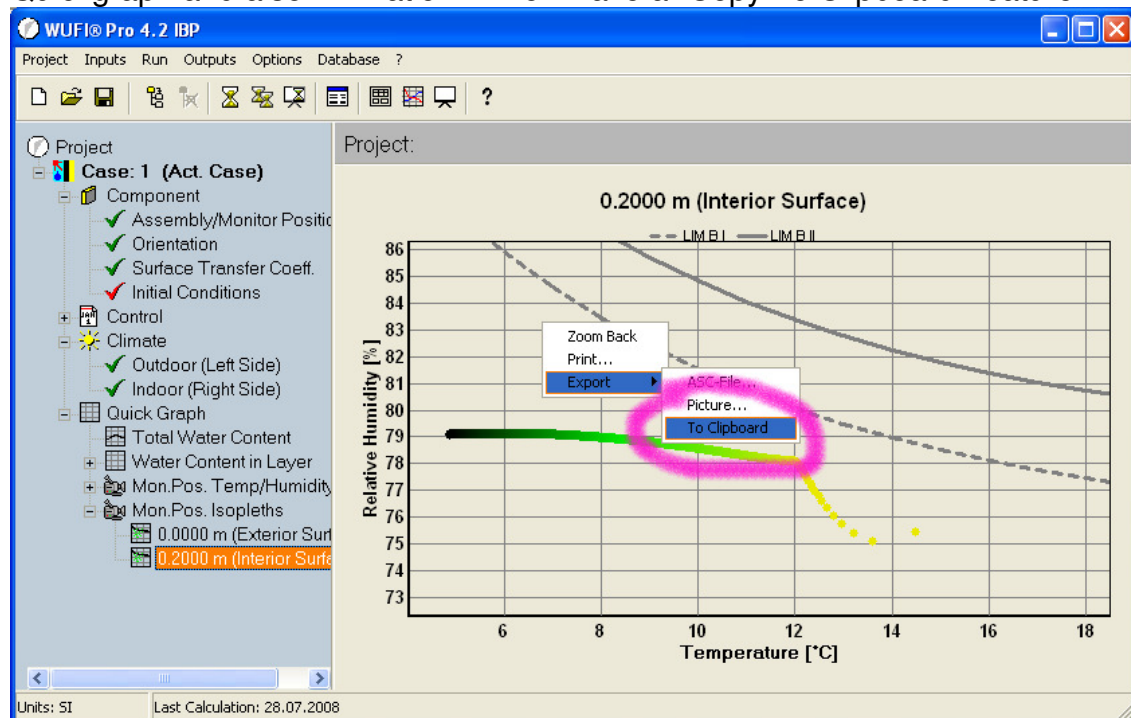
❖ Warning System

A warning system has been set up. It will pop up right before the calculation and should help you to avoid typical mistakes.



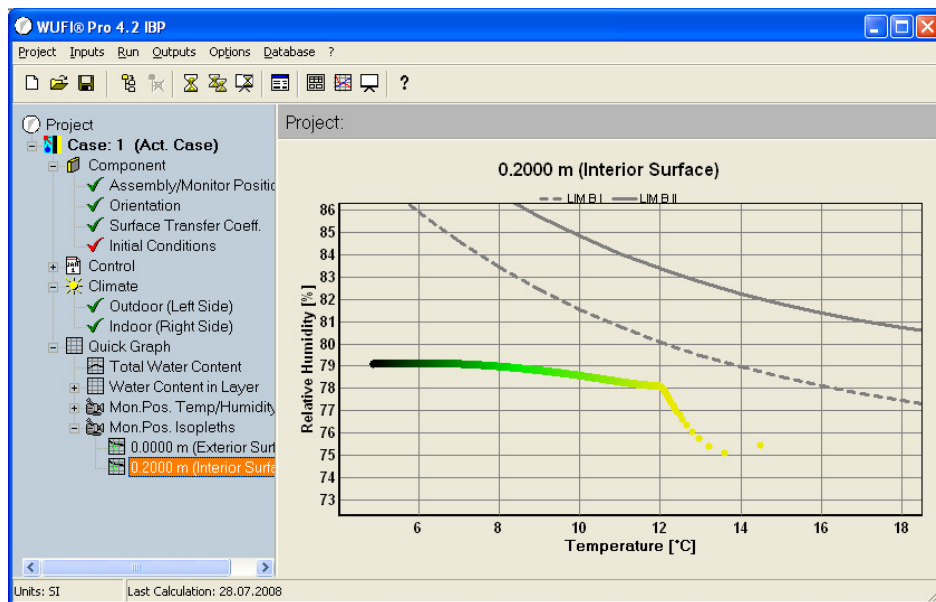
❖ Copy to Clipboard (only in Version WUFI Pro)

Quickgraph and also Animation1D now have a "Copy To Clipboard" feature.



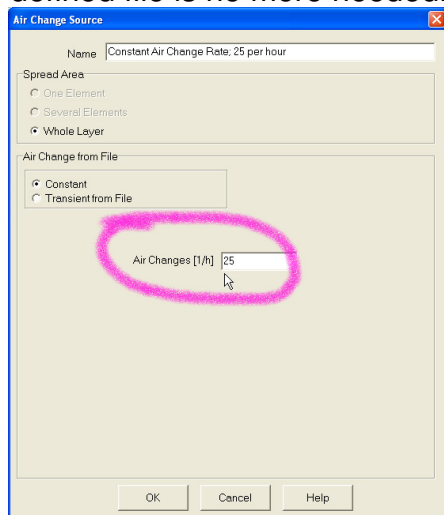
❖ Colored Points in Isoleth Diagram

The points in the Isoleth diagram are now colored beginning with yellow and ending with black. So the user can now estimate at what time individual points occur.



❖ **Constant Air Change Rate (only in Version WUFI Pro)**

For simple constant air change rates as an air-change source option a user defined file is no more needed.



Further information:

ENGLISH: http://www.hoki.ibp.fhg.de/wufi/updates_e.html

DEUTSCH: <http://www.hoki.ibp.fhg.de/wufi/updates.html>

Kind Regards,

M. Kehr

Dipl.-Ing. Manfred Kehr

Group Manager Software Development

Department Hygrothermics

eMail: Manfred.Kehr@ibp.fraunhofer.de

Phone +49 (0)8024 / 643-278

Fax +49 (0)8024 / 643-366

www.WUFI.com

www.ibp.fraunhofer.de