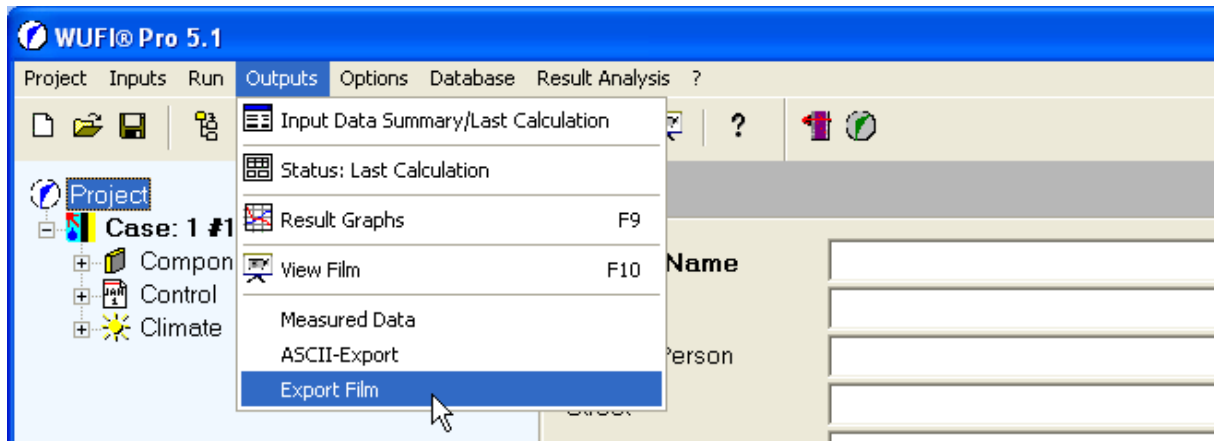


How to present WUFI® Film Documents (*.fid) on machines where no WUFI® is installed

To create WUFI® Film Documents (*.fid) which can be shown on other machines please use the option “Export Film” of WUFI®.

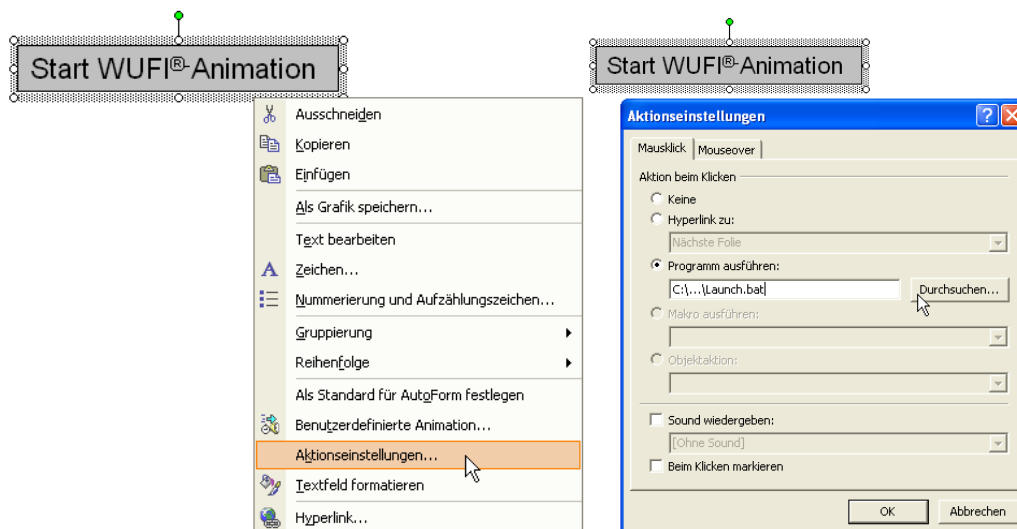


1. Normal Presentation

Extract the file Animation1D_Standalone.zip on that machine.
Replace the example films (example1.fid, example2.fid, example2.kfg) with your presentation films (*.fid; *.kfg).
Execute the file Launch.bat and all of your presentation films of the same folder will be loaded in Animation1D.

2. Powerpoint Presentation

Extract the file Animation1D_Standalone.zip on that machine.
Replace the example films (example1.fid, example2.fid, example2.kfg) with your presentation films (*.fid; *.kfg).
Use the “action” option of graphical elements in Powerpoint; switch to “Run Program” and insert there the file “Launch.bat”.



3. Create a Self-starting CD Presentation

Extract the file Animation1D_Standalone.zip on your machine.

Delete the File Readme.pdf

Replace the example films (example1.fid, example2.fid, example2.kfg) with your presentation films (*.fid; *.kfg).

Burn all files on a CD.

How to change the language of Animation1D

Open the file bin\Animation1D.ini with an editor

```
[Translation]
MainFile=WUFI.Eng
```

Replace “WUFI.Eng” in line no. 2 with the appropriate language file as follow:

Language	Name of language file
German	WUFI.Ger
English	WUFI.Eng
Finnish	WUFI.Fin
Polish	WUFI.Pol
French	WUFI.Fre
Norwegian	WUFI.Nor
Swedish	WUFI.Swe
Spanish	WUFI.Spa
Italian	WUFI.Ita
Portuguese	WUFI.Por
Czech	WUFI.Cze

For example if you like to have a German Animation1D change line no. 2 to

```
MainFile=WUFI.Ger
```

How to change the display of physical units

Depending on the selected language some symbols for the physical units (e.g. W/m², °C) may not be displayed correctly in WUFI® and Animation1D. In this case please open the file bin\Animation1D.ini with an editor

```
[General]
ReducedUnits=0
```

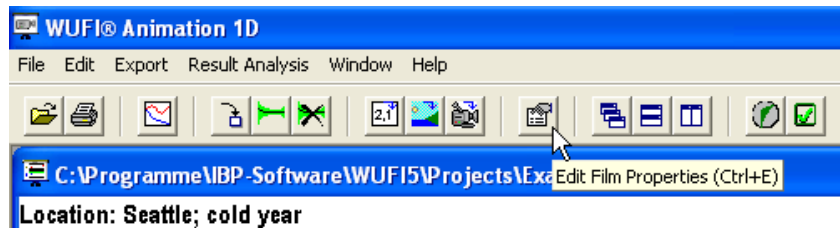
and change the second line above to ReducedUnits=1.

This will turn ² to ^{^2}; ³ to ^{^3} and °C to **degC**.

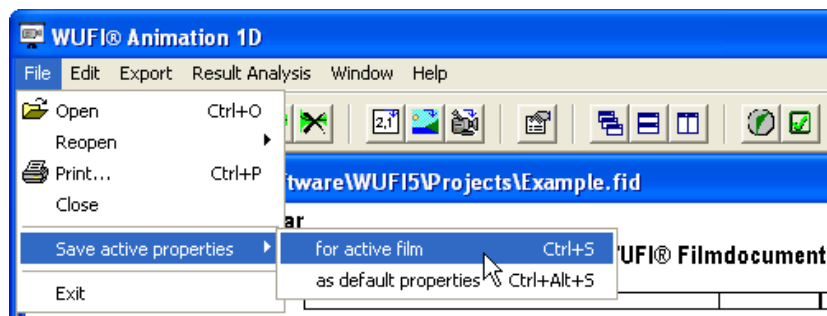
How to create and save display configurations of film documents

Open the film document (*.fid) in Animation1D

Change the display of the film according to your desire by using "Edit Film Properties".



Save the Configuration for the active film.



I wish you successful presentations,
Best Regards,

Manfred Kehrer

Dipl.-Ing. Manfred Kehrer

Group Manager Software Development
Department Hygrothermics

Fraunhofer-IBP, Holzkirchen
Fraunhoferstraße 10
83626 Valley

eMail: Manfred.Kehrer@ibp.fraunhofer.de

Phone +49 (0)8024 / 643-278

Fax +49 (0)8024 / 643-366

www.WUFI.de

www.ibp.fraunhofer.de