

# 1 Installation

## 1.1 System Requirements

IBM compatible computer, CPU at least 1.6 GHZ

RAM (Memory): 4 GB or better

Hard Drive: At least 8 GB free space

Graphic Card: At least 128 MB, OpenGL support

Operating System:

Windows 7;

Windows 10

.NET Framework: 3.5 with Service Pack 1

## 1.2 Installation + Update



This installation procedure must be executed for a new installation of WUFI® Plus and for updates. When an update is performed, the existing settings and database-entries will be transferred to the new version of WUFI® Plus automatically. User-defined database-entries will be transferred, too.

After the download of WUFI® Plus is complete, unzip the downloaded file into a new folder. It is crucial to unzip the file or the WUFI® Database will not be installed and WUFI® Plus cannot be started. This folder can be deleted after the installation has completed successfully.

Start the WUFI® Plus setup by double-clicking the Setup-File. The setup-dialog will open. Click *Next* to continue with the installation and *Cancel* to end it:

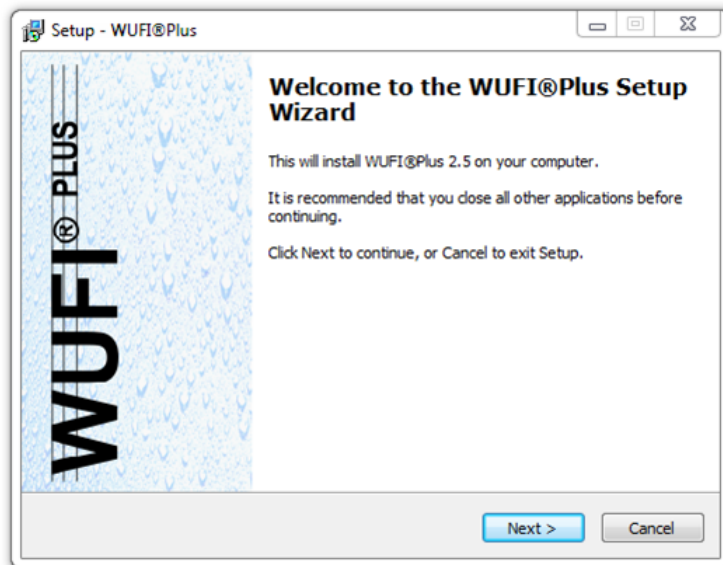


Figure 1: Installation: Start the setup

Please read the License Agreement. You must accept the terms of this agreement before continuing with the installation.

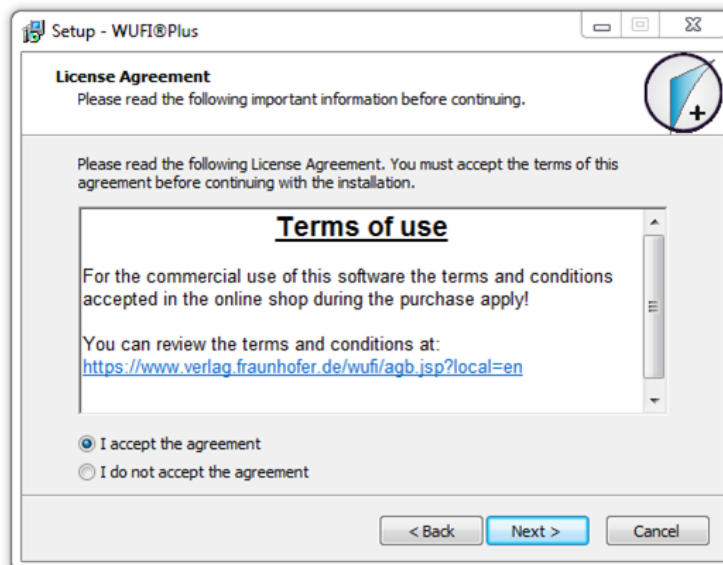


Figure 2: Installation: Terms of use

Please make sure that your computer meets the system requirements:

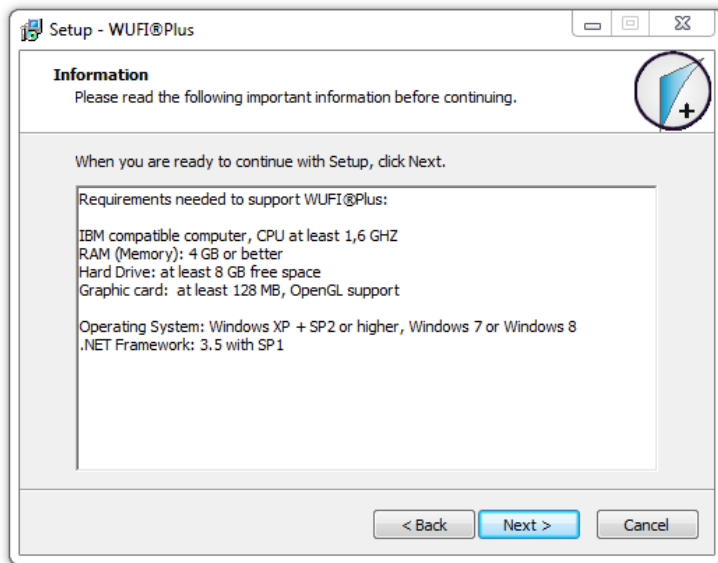


Figure 3: Installation: System requirements

Input your license information from the Purchase-Email. Please note, that the license key from the Purchase-Email must be entered in the Serial Number field. It is recommended to copy the license information directly from our Purchase-Email to avoid input errors:

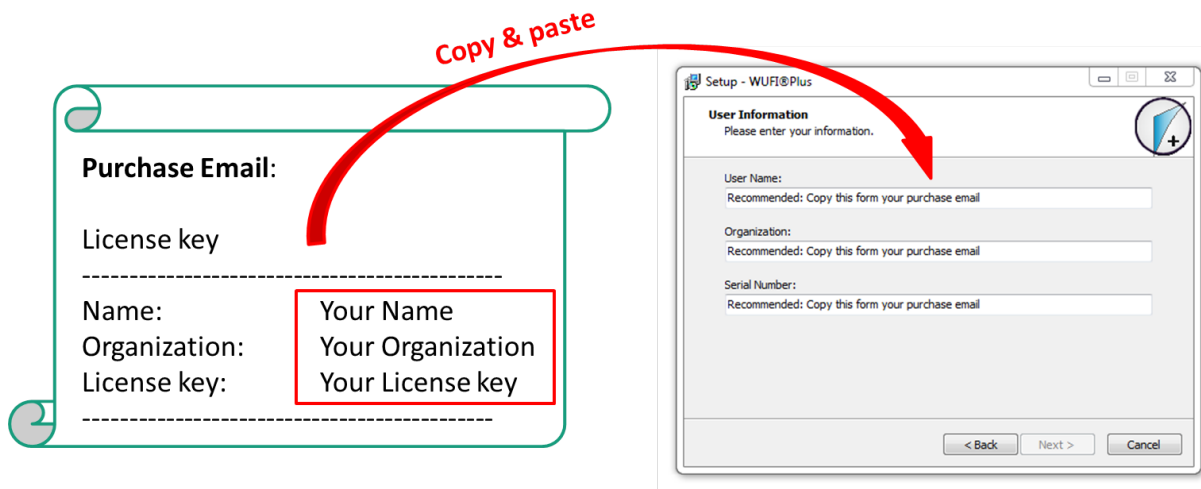


Figure 4: Installation: System requirements

If the license information was entered correctly, the *Next*-button can be selected and the installation folder can be chosen. WUFI® Plus setup will create an entry in the Windows Start Menu. Its name can be entered in the next dialog:

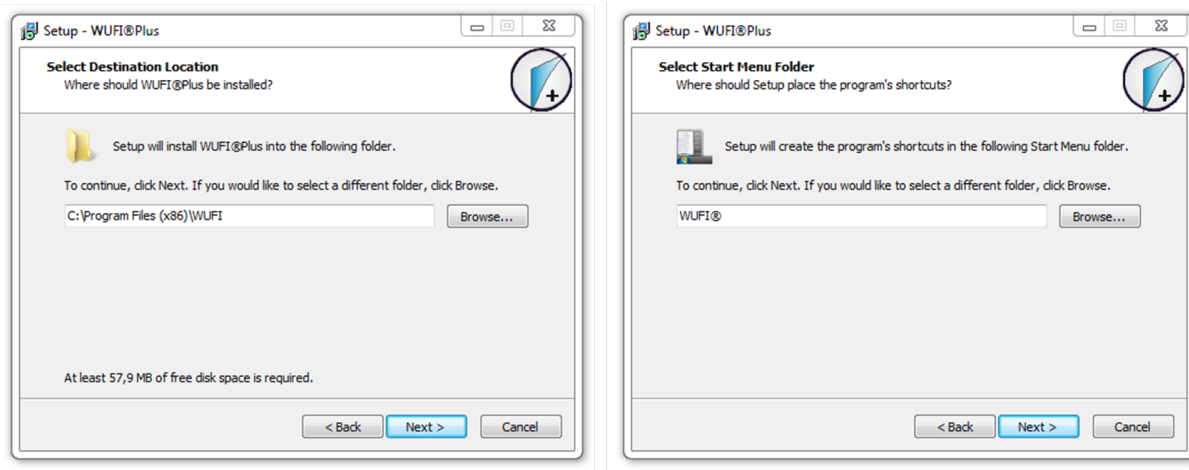


Figure 5: Installation: Select the installation folder and create an entry in the Windows Start Menu.

There is also an option to create a desktop icon:

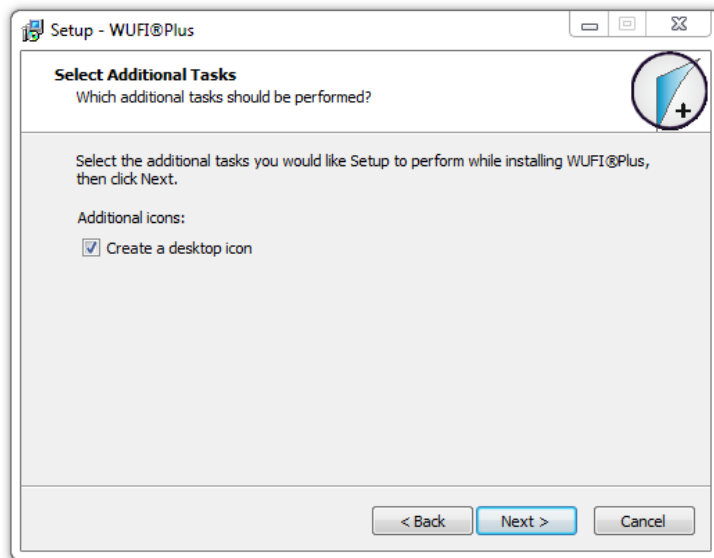


Figure 6: Installation: Create a desktop icon

An info-screen sums up all settings for the installation-process. Please check these settings and use the *Back*-button to change any part of the installation. After all settings are entered correctly, click *Install* to continue with the installation.

After the installation of WUFI® Plus has finished successfully, a second setup-dialog for the WUFI® Database opens:



Figure 7: Installation: Start the installation of the WUFI® Database.

Select the installation folder for the WUFI® Database:

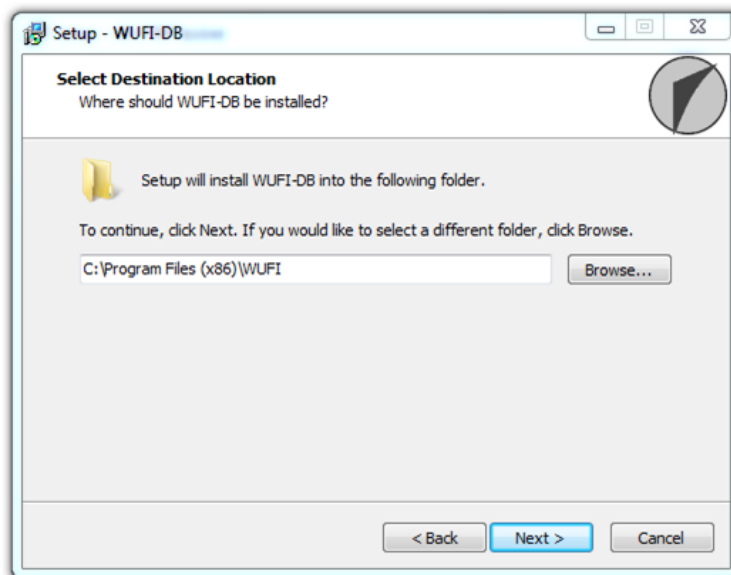


Figure 8: Installation: Select the folder for the installation of the WUFI® Database.

An info-screen sums up all settings for the installation-process. Please check these settings and use the *Back*-button to change any part of the installation. After all settings are entered correctly, click *Install* to continue with the installation.

After both installations are finished, click the *Finish*-button to complete the setup-process.

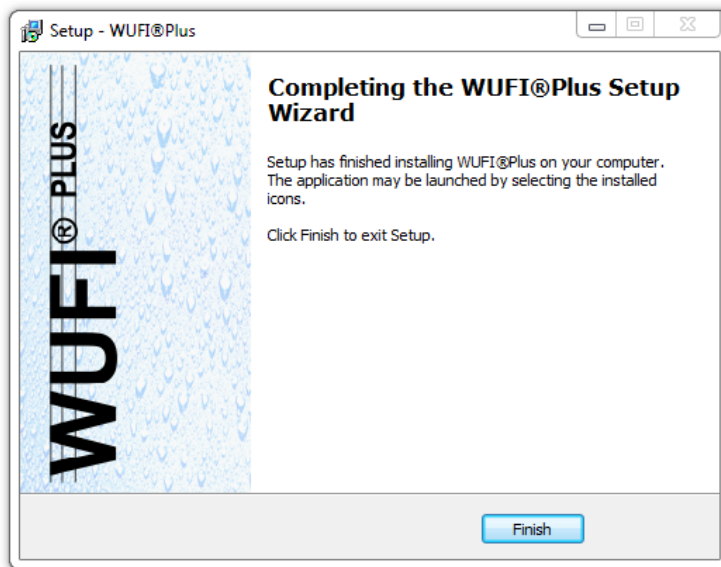


Figure 9: Installation: Finish the installation of WUFI® Plus and the WUFI® Database.

WUFI® Plus can now be started from the Windows Start Menu or from the desktop icon (if created).

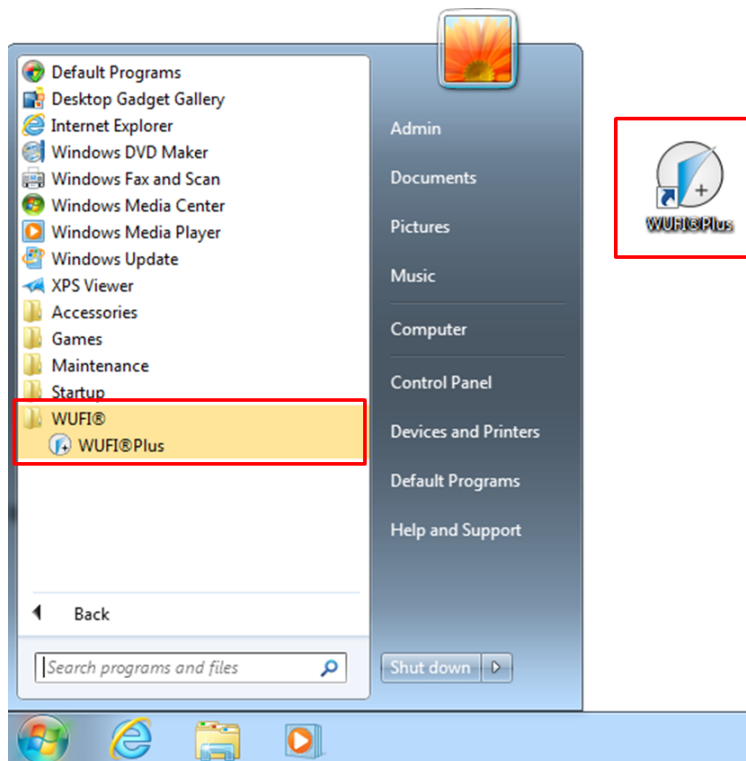


Figure 10: Installation: Starting WUFI® Plus either from the Windows Start Menu or the desktop shortcut.